

[illegible]

1. **Identify the problem.** What is the issue or challenge you are facing? What are the symptoms or signs of the problem?

2. **Analyze the problem.** What are the causes of the problem? What are the contributing factors? What are the underlying issues?

3. **Generate solutions.** Brainstorm potential solutions. Consider different perspectives. Evaluate the pros and cons of each solution.

4. **Select a solution.** Choose the most viable solution based on the analysis. Consider the feasibility, effectiveness, and impact of the solution.

5. **Implement the solution.** Develop a plan of action. Assign responsibilities. Set a timeline. Monitor progress.

6. **Evaluate the results.** Assess the outcome of the solution. Measure the impact. Reflect on the process. Learn from the experience.

附錄四 臺灣證券交易所 2015 年制

[illegible]

Aguirre Arquitectura

影像：萊昂納多·費諾堤建築攝影師 文字：阿古雷建築師事務所
Photo：Leonardo Finotti Architectural Photographer Text：Aguirre Arquitectura

我們討論太多細節設計，但是卻很少真正知道它的意思。多數人以為細節設計只是將裝飾或裝飾品安置於建築內，而卻認為：古典時期建築內，這些裝飾品恆已盡上句點。細節設計以前是裝飾品，如今是結構上的解決方法。對我而言，細節設計就是精確設計案的獨特之處來獲得想要的結果。細節設計或許是建築中最細微的部分。如果最終的建構步驟決定設計案的品質，建築師就要成為觀察細節設計才能獲得想要的結果，這點再獲得不過了。我們必須將細節設計視為整體建構過程的一部分，如此，大家才能清楚了解執行過程的技術困難。若沒有明確掌握這項概念，細節設計就沒必要存在。在克服成功與具體實體方面的問題時，並非採用正確和善的解決方案來滿足需求，而是適切融合概念體態。然後搭配它的方法方案達到設計的最終結果。我的建築就是規劃好設計並確保品質。其實，細節設計在建築中扮演著關鍵之職。為了說明建築與細節設計的關係，著名的德國美籍建築師路德維希·密斯（Ludwig von Rohé）甚至說過一句名言：「上帝在於細節中（God is in the details）」¹。建築師必須詳究建構系統，以便從技術角度，同時確保實現期已知的（永恆世界）

Too much is said about details but little is known about the true meaning of what details really are. For most people, details mean just ornaments or decorative objects placed in architectural work. But for me, this concept of ornamented details some time ago with the end of the classical era, and the things that were once ornaments were turned into constructive solutions. For me detailing is to specify the particularity of a project to achieve an expected end. The details are perhaps not so much understood parts but two given architectural parts. If the final materiality is determined by the quality of a project and the production, it becomes clear that to achieve the sought after quality, one must manage in a very detailed manner. We need to treat the details as part of a whole group to give them the true meaning of being part of the building process. This is because paying this attention will allow for technical information of the execution to be further understood. This concept being very clear in our minds, the need for the existence of such details are lost. The quality of my work is not only a consequence of the correct and harmonious solution of functional and the volumetric problems, but this quality is also the perfect integration of these general ideas coupled with the necessary solutions to reach the desired finish. Surely the reason for my architecture is the creation and quality of detail for implementation. Indeed, they qualify the building. Even the great architect Miles van der Rohe defined the relationship between architecture and detail in his famous phrase " God is in the details ". The architecture must assume the role of valuing the constructive system for this to be a way to progress technologically and to reach over-desired sustainable work as quickly as possible.

亞歷山大·阿吉雷 Alexandre Aguirre

1976 Born in Uberlândia, Brazil
1996–2002 Studied Architecture at Centro Universitário do Triângulo, Brazil
2004–2005 Studied Steel Structures at Universitat Politècnica de Catalunya in Barcelona, Spain
2006 Established Aguirre Arquitetura
2010 Awarded the First Place, "Content Award"
2014 Studied Master of Sustainable Architecture in AVM Faculdade Integrada



巴西烏貝蘭迪亞市TB別墅
TB House, Uberlândia, Brazil

Swimming Pool · Vanity · Bathroom · Door | TB House, Uberlândia, Brazil

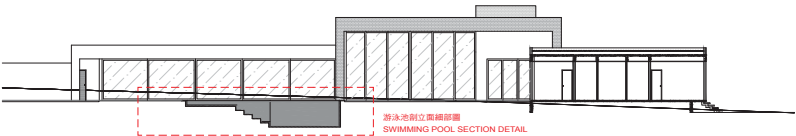
游泳池 · 梳妝台 · 衛浴 · 門 巴西烏貝蘭迪亞市TB別墅

阿吉雷建築師事務所 | Aguirre Arquitetura

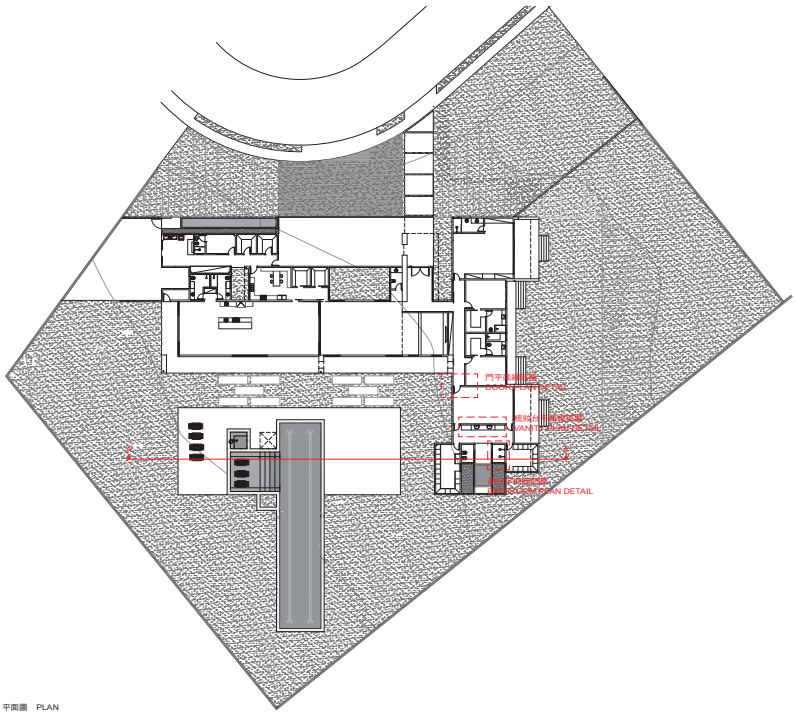
影像：萊昂納多·費諾提建築攝影師
Photos：Leonardo Finetti Architectural Photographer

TB別墅（TB House）佔地寬敞，座落於有門禁管制的社區。它是一層樓建築物，提供各項功能的起居區和諧地分散四處，讓業主得以享有隱私。起居區（接待區）包含一間電影室、客廳、餐廳與露台；這些區域朝南，免受陽光直射，因此較為涼爽。此外，服務設施區則朝北與朝西。室內外的細節設計全都依照別墅的整體規劃來設計，亦即要營造乾淨一致的線條，強調輕盈與明亮，同時採用高雅的建材。

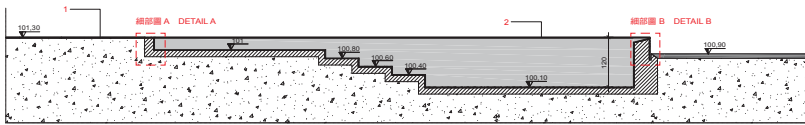
Located on a spacious site within a gated community, the TB House follows a one-storey plan that resulted in a functional design with a harmonious distribution of the living area, with the emphasis on privacy. The living/reception spaces - which include a cinema room, living room, dining room and terrace - face south so that they avoid direct exposure to the sun and are thus cooler. The service area faces north and west. All detailing, both in the interior and exterior, was designed to give continuity to the architectural proposal, i.e. clean, uniform lines with the emphasis on lightness and extreme elegance in the definition of the materials.



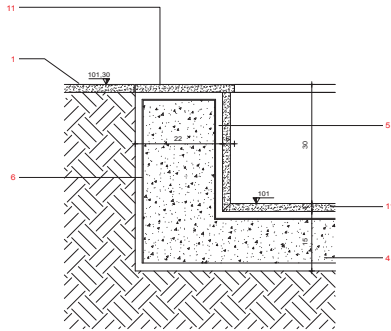
游泳池剖面圖 SECTION A-A



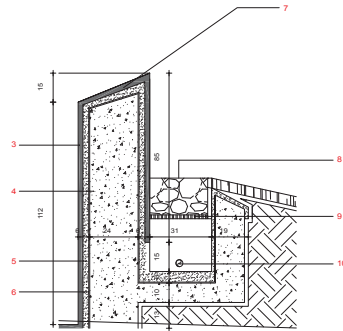
平面圖 PLAN



游泳池剖面圖 SWIMMING POOL SECTION DETAIL



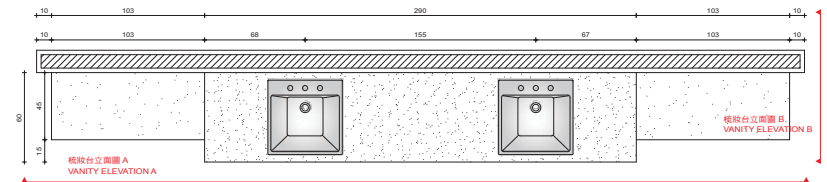
細部圖 A: DETAIL A



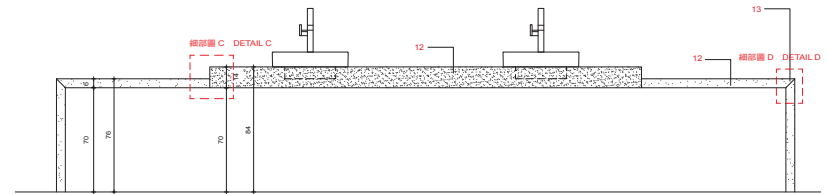
細部圖 B: DETAIL B

1. 石灰華大塊石地磚
2. 石灰華大塊石瓷磚游泳池
3. 石灰華大塊石
4. 混凝土結構
5. 灌漿水泥
6. 防水膜
7. 石灰華大塊石無邊/溢流(池)
8. 溢流水盆
9. 不銹鋼格柵
10. 排水點
11. 石灰華大塊石瓷磚
12. 白色微晶琉璃或白色賽麗石檯面
13. 斜角接合

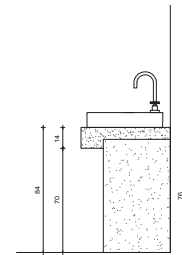
1. traverline marble flooring
2. traverline marble tiled pool
3. traverline marble
4. concrete structure
5. grout
6. waterproof membrane
7. traverline marble infinity edge/ water overflow
8. overflow basin
9. stainless steel grid
10. drainage point
11. traverline marble tiling
12. white mamoglass or silestone benchtop
13. mitre joint



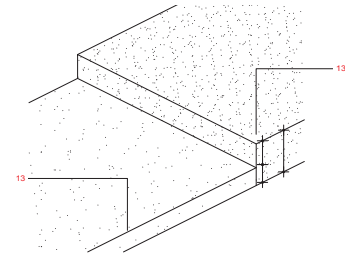
梳妝台平面圖 VANITY PLAN DETAIL



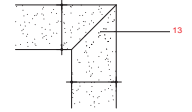
梳妝台立面圖 A VANITY ELEVATION A



梳妝台立面圖 B VANITY ELEVATION B



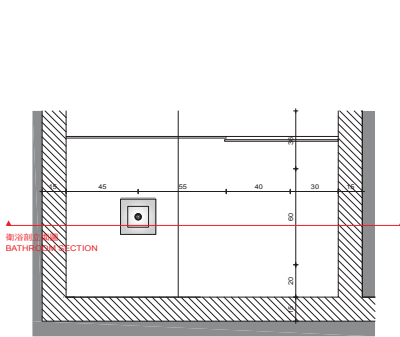
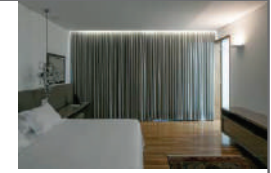
細部圖 C: DETAIL C



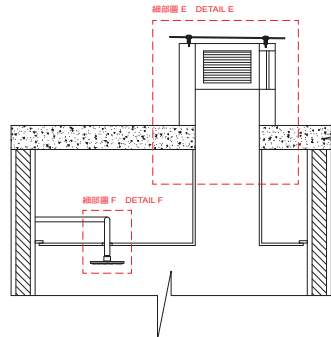
細部圖 D: DETAIL D



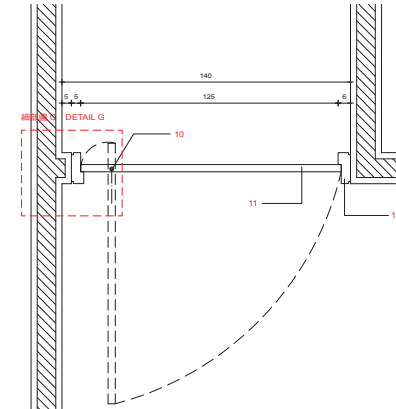
- | | |
|----------------|---------------------------------------|
| 1. 磚塊 | 1. brickwork |
| 2. 8毫米安全玻璃 | 2. safety glass 8mm |
| 3. 固定點，以便通風 | 3. fixing point to allow ventilation |
| 4. 通風百葉窗 | 4. ventilation louvre panel |
| 5. 粉飾或白色的石膏板 | 5. white painted plasterboard |
| 6. 粉飾或白色的石膏天花板 | 6. white painted plasterboard ceiling |
| 7. 圓孔 | 7. round hole |
| 8. 天花板 | 8. ceiling |
| 9. 天花淋浴頭 | 9. ceiling shower head |
| 10. 樞軸 | 10. pivot |
| 11. 白色夾板門 | 11. white laminate door |
| 12. 龍鳳樑木框緣 | 12. freijo timber architrave |



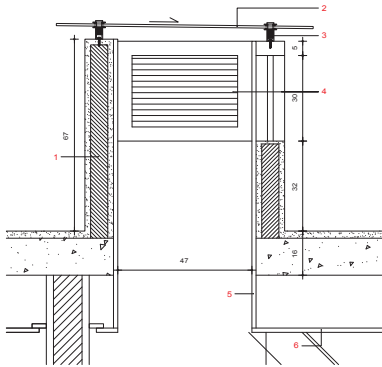
衛浴平面細部圖 BATHROOM PLAN DETAIL



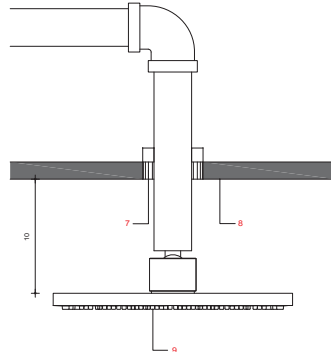
衛浴剖立面圖 BATHROOM SECTION



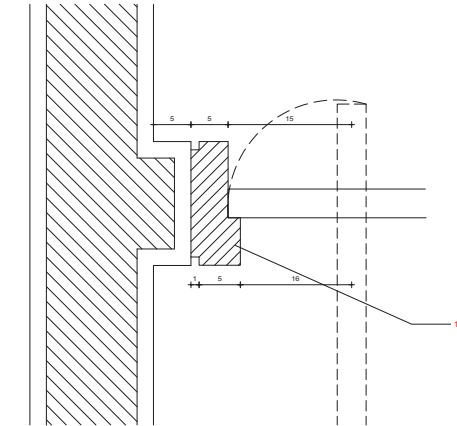
門平面細部圖 DOOR PLAN DETAIL



細部圖 E DETAIL E



細部圖 F DETAIL F



細部圖 G DETAIL G